

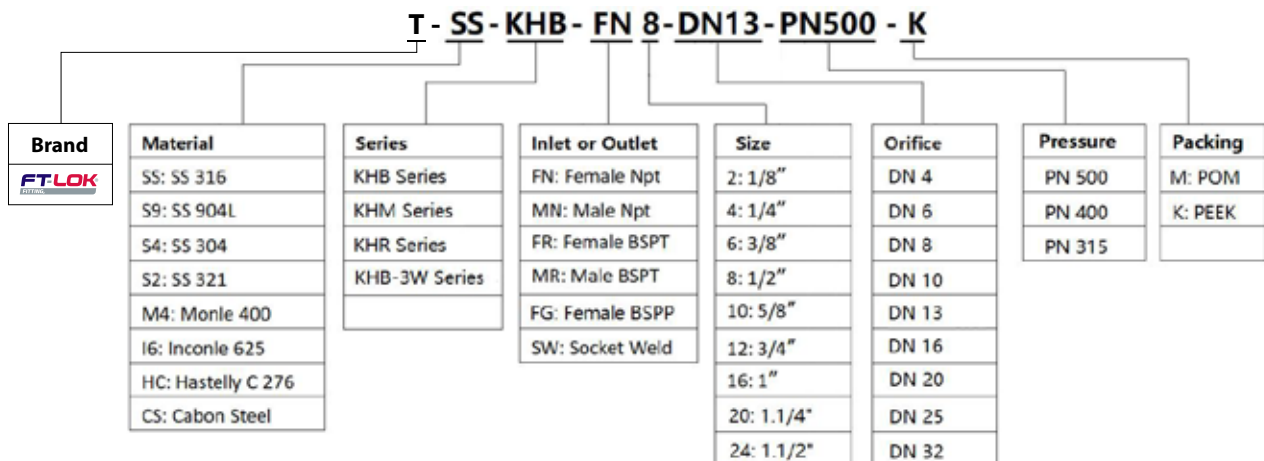
HYDRAULIC BALL VALVES



Contents

KHB/KHM Series Ball Valve	3
KHR Series Ball Valve	5
KHB-3W Series 3-way Ball Valve	6
KHB Series with Linkage Handle	8
Ball Valve with Mounting hole	9
KHBS Series (SAE Flange Ball Valve)	10
KHBG Series (SAE Flange Ball Valve)	11
KHSA Series (SAE Flange Ball Valve)	12
BEH Series (SAE Flange Ball Valve)	13
KHBF Series (Flange Ball Valve)	
KHP Series (Plate Type Ball Valve)	14
3KH/4KH Series (3-way/4way Ball Valve)	
CJZQ Series Ball Valve	16
QINS Series Ball Valve	17
JZQ Series Ball Valve	
KJ Series (Ball Valve for Coal Mine)	19
ZK-KBV Series (Ball Valve for Coal Mine)	
ZK-CV Series (Ball Valve for Broken Pipe)	20
KBKH Series Ball Valve	
PBV Series (Pneumatic Ball Valve)	21
EBV Series (Electric Ball Valve)	

Part NO. Description



Construction

1. 2-way Ball Valves (DIN-ISO1219)

Item	Name	Material	
		Stainless Steel	Carbon Steel
1	Fittings	SS 316 / SS 304	A105 / 45#
2	O-ring	FKM	NBR
3	Packing	POM / PEEK	POM
4	Stem	SS 316 / SS 304	A105 / 45#
5	O-ring	POM / PEEK	POM
6	stop Pin	SS 316 / SS 304	A105 / 45#
7	Washer	SS 316 / SS 304	A105 / 45#
8	Body	SS 316 / SS 304	A105 / 45#
9	Ball	SS 316 / SS 304	A105 / 45#

2. 3-way Ball Valves (DIN2429)

Item	Name	Material	
		Stainless Steel	Carbon Steel
1	Fittings	SS 316 / SS 304	A105 / 45#
2	O-ring	FKM	NBR
3	Packing	POM / PEEK	POM
4	Stem	SS 316 / SS 304	A105 / 45#
5	O-ring	POM / PEEK	POM
6	stop Pin	SS 316 / SS 304	A105 / 45#
7	Washer	SS 316 / SS 304	A105 / 45#
8	Body	SS 316 / SS 304	A105 / 45#
9	Ball	SS 316 / SS 304	A105 / 45#

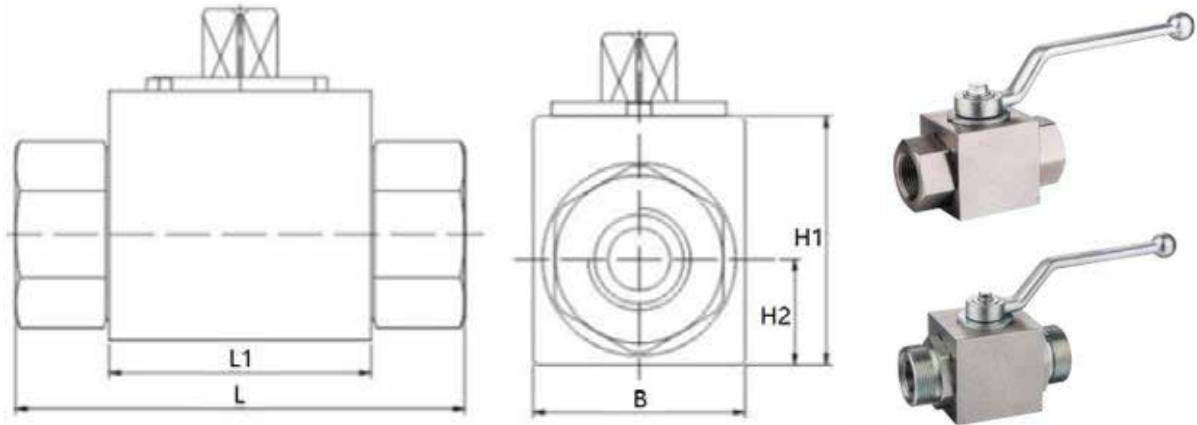
3. Multi way ball valve (DIN2429)

Item	Name	Material	
		Stainless Steel	Carbon Steel
1	Fittings	SS316 / SS304	A105 / 45#
2	O-ring	FKM	NBR
3	O-ring	FKM	NBR
4	Support Ring	SS316 / SS304	A105 / 45#
5	Packing	POM / PEEK	POM
6	O-ring	FKM	NBR
7	Ball	SS316 / SS304	A105 / 45#
8	Guide bearing	SS316 / SS304	A105 / 45#
9	O-ring	FKM	NBR
10	Cover Plate	SS316 / SS304	A105 / 45#
11	Body	SS316 / SS304	A105 / 45#

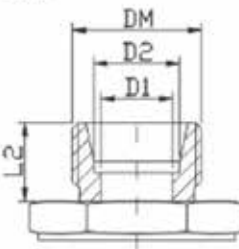
4. Flange Ball Valve (DIN-ISO1219)

Item	Name	Material	
		Stainless Steel	Carbon Steel
1	Fittings	SS 316 / SS 304	A105 / 45#
2	Flange	SS 316 / SS 304	A105 / 45#
3	O-ring	FKM	NBR
4	Packing	POM / PEEK	POM
5	Stem	SS 316 / SS 304	A105 / 45#
6	O-ring	FKM	NBR
7	stop Pin	SS 316 / SS 304	A105 / 45#
8	Washer	SS 316 / SS 304	A105 / 45#
9	Body	SS 316 / SS 304	A105 / 45#
10	Ball	SS 316 / SS 304	A105 / 45#

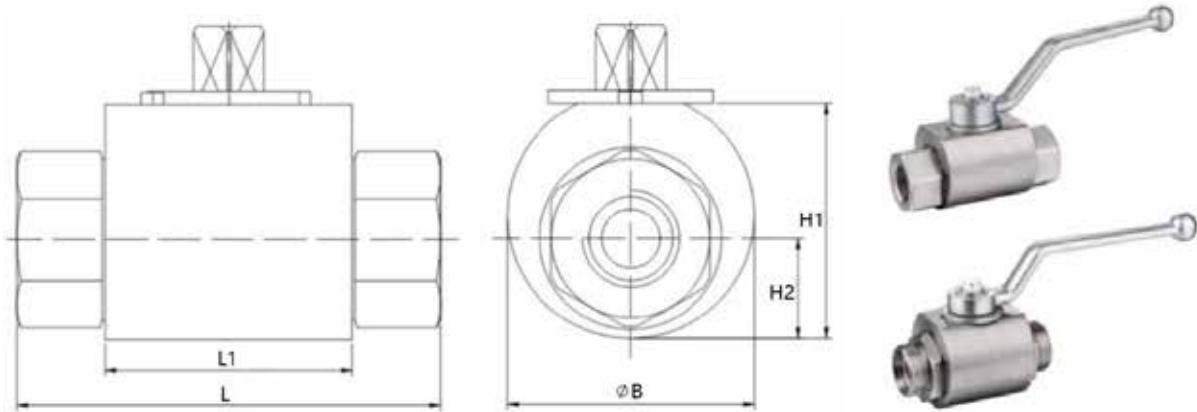
KHB Series

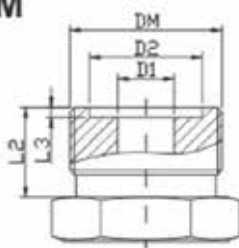


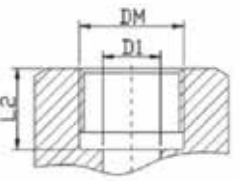
M	Part NO.	PN	DN	Dimension(mm)									
				D1	D2	DM	L	L1	L2	L3	H1	H2	B
	KHB-M16	500	06	6	11	M16*1.5	69	40	11	1.4	32	13	26
	KHB-M22	500	08	8	16	M22*1.5	76	42	12	1.8	40	17	34
	KHB-M27	500	10	10	20	M27*1.5	76	42	12	1.8	40	17	34
	KHB-M30	400	16	15	24	M30*1.5	84	48	13	1.8	45	19	38
	KHB-M36	315	20	19	30	M36*2	103	60	15	2.4	56	24	48
	KHB-M42	315	25	24	35	M42*2	116	64	18	2.4	63	29	58
	KHB-M52	315	32	30	40	M52*2	149	72	20	2.4	75	34	69
	KHB-M60	315	40	36	45	M60*2	174	80	22	2.4	86	40	80
G	KHB-FG2	500	04	4	-	G1/8	69	40	10	-	32	13	26
	KHB-FG4	500	06	6	-	G1/4	69	40	14	-	32	13	26
	KHB-FG6	500	10	10	-	G3/8	72	42	14	-	40	17	34
	KHB-FG8	500	13	13	-	G1/2	83	48	16	-	40	17	34
	KHB-FG8	400	16	15	-	G1/2	83	48	16	-	45	19	38
	KHB-FG12	315	20	19	-	G3/4	95	60	18	-	56	24	48
	KHB-FG16	315	25	24	-	G1	113	64	20	-	63	29	58
	KHB-FG20	315	32	30	-	G1 1/4	110	72	22	-	75	34	68
	KHB-FG24	315	40	38	-	G1 1/2	130	80	24	-	86	40	80
	KHB-FG32	315	50	48	-	G2	140	96	26	-	104	48	99
NPT	KHB-FN2	500	04	4	-	NPT1/8	69	40	10	-	32	13	26
	KHB-FN4	500	06	6	-	NPT1/4	69	40	14	-	32	13	26
	KHB-FN6	500	10	10	-	NPT3/8	72	42	14	-	40	17	34
	KHB-FN8	500	13	13	-	NPT1/2	83	48	16	-	40	17	34
	KHB-FN8	400	16	15	-	NPT1/2	83	48	16	-	45	19	38
	KHB-FN12	315	20	19	-	NPT3/4	95	60	18	-	56	24	48
	KHB-FN16	315	25	24	-	NPT1	113	64	20	-	63	29	58
	KHB-FN20	315	32	30	-	NPT1 1/4	110	72	22	-	75	34	68
	KHB-FN24	315	40	38	-	NPT1 1/2	130	80	24	-	86	40	80
	KHB-FN32	315	50	48	-	NPT2	140	96	26	-	104	48	99
LR	KHB-06LR	500	04	4	6	M12*1.5	67	40	10	-	32	13	26
	KHB-08LR	500	06	6	8	M14*1.5	67	40	10	-	32	13	26
	KHB-10LR	500	08	8	10	M16*1.5	74	42	11	-	40	17	34
	KHB-12LR	500	10	10	12	M18*1.5	74	42	11	-	40	17	34
	KHB-15LR	500	13	12	15	M22*1.5	82	48	12	-	40	17	34
	KHB-18LR	400	16	15	18	M26*1.5	82	48	12	-	40	17	34
	KHB-22LR	315	20	19	22	M30*2	101	60	14	-	56	24	48
	KHB-28LR	315	25	24	28	M36*2	108	64	14	-	63	29	58
	KHB-35LR	315	32	30	35	M45*2	141	72	16	-	75	34	68
	KHB-42LR	315	40	36	42	M52*2	162	80	16	-	86	40	80

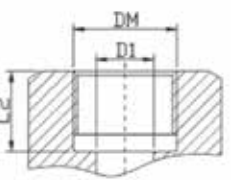
SR	Part NO.	PN	DN	Dimension(mm)									
				D1	D2	DM	L	L1	L2	L3	H1	H2	B
					KHB-M16	500	06	6	11	M16*1.5	69	40	11
KHB-M22	500	08	8	16	M22*1.5	76	42	12	1.8	40	17	34	
KHB-M27	500	10	10	20	M27*1.5	76	42	12	1.8	40	17	34	
KHB-M30	400	16	15	24	M30*1.5	84	48	13	1.8	45	19	38	
KHB-M36	315	20	19	30	M36*2	103	60	15	2.4	56	24	48	
KHB-M42	315	25	24	35	M42*2	116	64	18	2.4	63	29	58	
KHB-M52	315	32	30	40	M52*2	149	72	20	2.4	75	34	69	
KHB-M60	315	40	36	45	M60*2	174	80	22	2.4	86	40	80	

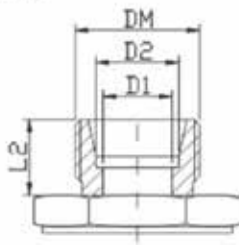
KHR Series

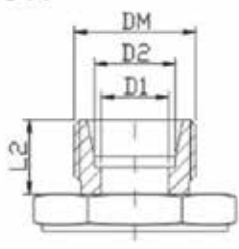


M	Part NO.	PN	DN	Dimension(mm)									
				D1	D2	DM	L	L1	L2	L3	H1	H2	ØB
					KHR-M16	500	06	6	11	M16*1.5	69	40	11
KHR-M22	500	08	8	16	M22*1.5	76	42	12	1.8	40	17	42	
KHR-M27	500	10	10	20	M27*1.5	76	42	12	1.8	40	17	42	
KHR-M30	400	16	15	24	M30*1.5	84	48	13	1.8	45	19	50	
KHR-M36	315	20	19	30	M36*2	103	60	15	2.4	56	24	60	
KHR-M42	315	25	24	35	M42*2	116	64	18	2.4	63	29	68	
KHR-M52	315	32	30	40	M52*2	149	72	20	2.4	75	34	87	
KHR-M60	315	40	36	45	M60*2	174	80	22	2.4	86	40	95	

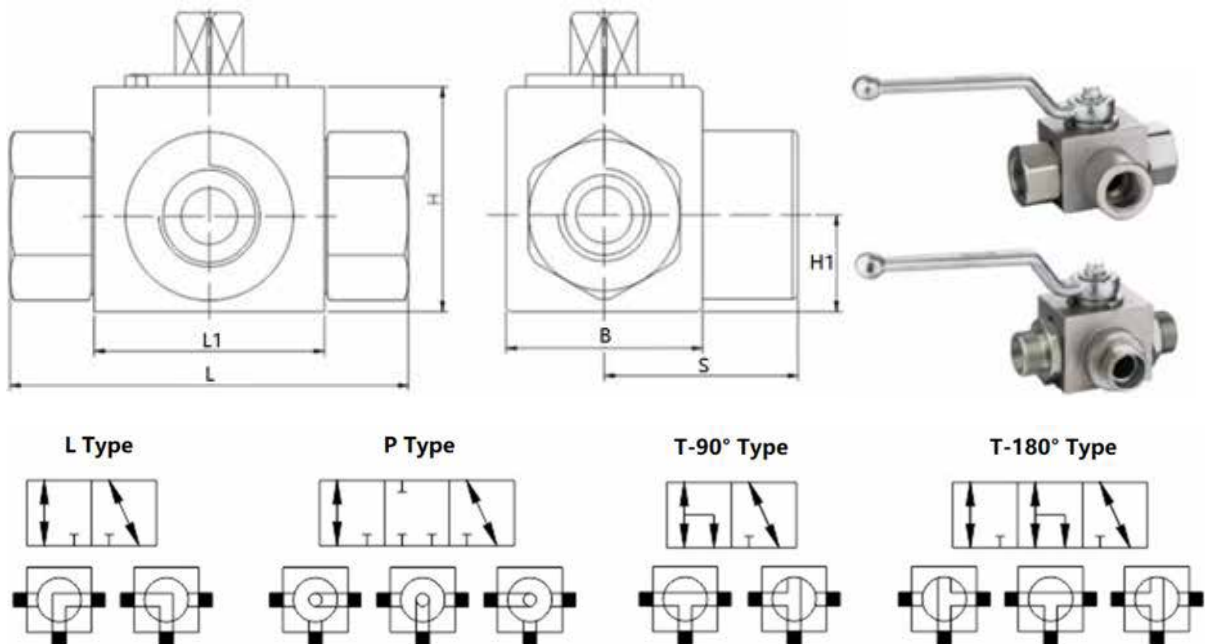
G	Part NO.	PN	DN	D1	D2	DM	Dimension(mm)						
							L	L1	L2	L3	H1	H2	ØB
								KHR-FG2	500	04	4	-	G1/8
KHR-FG4	500	06	6	-	G1/4	69	40	14	-	32	13	35	
KHR-FG6	500	10	10	-	G3/8	72	42	14	-	40	17	42	
KHR-FG8	500	13	13	-	G1/2	83	48	16	-	40	17	45	
KHR-FG8	400	16	15	-	G1/2	83	48	16	-	45	19	50	
KHR-FG12	315	20	19	-	G3/4	95	60	18	-	56	24	60	
KHR-FG16	315	25	24	-	G1	113	64	20	-	63	29	68	
KHR-FG20	315	32	30	-	G1 1/4	110	72	22	-	75	34	87	
KHR-FG24	315	40	38	-	G1 1/2	130	80	24	-	86	40	95	
KHR-FG32	315	50	48	-	G2	140	96	26	-	104	48	112	

NPT	Part NO.	PN	DN	D1	D2	DM	Dimension(mm)						
							L	L1	L2	L3	H1	H2	ØB
								KHR-FN2	500	04	4	-	NPT1/8
KHR-FN4	500	06	6	-	NPT1/4	69	40	14	-	32	13	35	
KHR-FN6	500	10	10	-	NPT3/8	72	42	14	-	40	17	42	
KHR-FN8	500	13	13	-	NPT1/2	83	48	16	-	40	17	45	
KHR-FN8	400	16	15	-	NPT1/2	83	48	16	-	45	19	50	
KHR-FN12	315	20	19	-	NPT3/4	95	60	18	-	56	24	60	
KHR-FN16	315	25	24	-	NPT1	113	64	20	-	63	29	68	
KHR-FN20	315	32	30	-	NPT1 1/4	110	72	22	-	75	34	87	
KHR-FN24	315	40	38	-	NPT1 1/2	130	80	24	-	86	40	95	
KHR-FN32	315	50	48	-	NPT2	140	96	26	-	104	48	112	

LR	Part NO.	PN	DN	Dimension(mm)									
				D1	D2	DM	L	L1	L2	L3	H1	H2	ØB
	KHR-06LR	500	04	4	6	M12*1.5	67	40	10	-	32	13	35
	KHR-08LR	500	06	6	8	M14*1.5	67	40	10	-	32	13	35
	KHR-10LR	500	08	8	10	M16*1.5	74	42	11	-	40	17	42
	KHR-12LR	500	10	10	12	M18*1.5	74	42	11	-	40	17	42
	KHR-15LR	500	13	12	15	M22*1.5	82	48	12	-	40	17	45
	KHR-18LR	400	16	15	18	M26*1.5	82	48	12	-	40	17	50
	KHR-22LR	315	20	19	22	M30*2	101	60	14	-	56	24	60
	KHR-28LR	315	25	24	28	M36*2	108	64	14	-	63	29	68
	KHR-35LR	315	32	30	35	M42*2	141	72	16	-	75	34	87
KHR-42LR	315	40	36	42	M52*2	162	80	16	-	86	40	95	

SR	Part NO.	PN	DN	Dimension(mm)									
				D1	D2	DM	L	L1	L2	L3	H1	H2	ØB
	KHR-08SR	500	04	4	8	M14*1.5	73	40	12	-	32	13	35
	KHR-10SR	500	06	6	10	M16*1.5	73	40	12	-	32	13	35
	KHR-12SR	500	08	8	12	M18*1.5	76	42	12	-	40	17	42
	KHR-14SR	500	10	10	14	M22*1.5	80	42	14	-	40	17	42
	KHR-16SR	500	13	12	16	M24*1.5	86	48	14	-	40	17	45
	KHR-20SR	500	13	12	20	M30*2	90	48	16	-	40	17	45
	KHR-20SR	400	16	15	20	M30*2	90	48	16	-	45	19	50
	KHR-25SR	315	20	19	25	M36*2	109	60	18	-	56	24	60
	KHR-30SR	315	25	24	30	M42*2	120	64	20	-	63	29	68
KHR-38SR	315	32	30	38	M52*2	153	72	22	-	75	34	87	

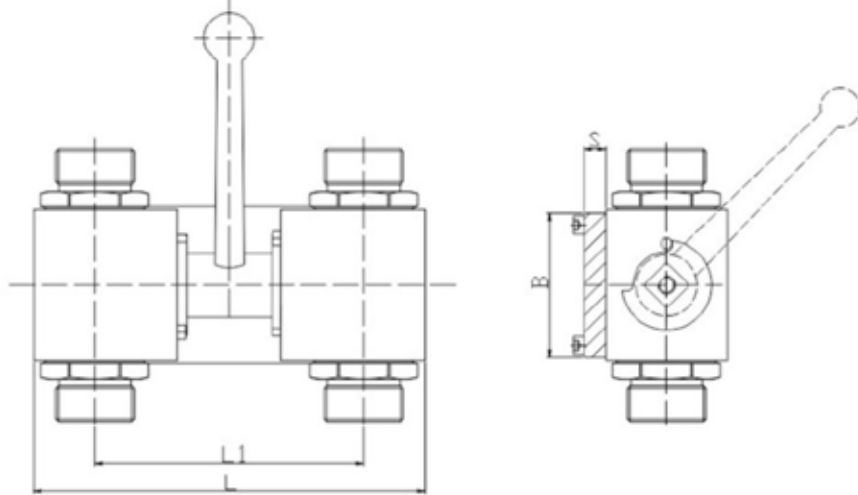
KHB-3W Series (3-way Ball Valve)



M	Part NO.	PN	DN	Dimension(mm)										
				D1	D2	DM	L	L1	L2	L3	H	H1	B	S
	KHB-3W-M16	500	06	6	11	M16*1.5	69	40	11	1.4	32	13	26	35
	KHB-3W-M22	500	08	8	16	M22*1.5	76	42	12	1.8	40	17	34	36.5
	KHB-3W-M27	500	10	10	20	M27*1.5	76	42	12	1.8	40	17	34	36.5
	KHB-3W-M30	400	16	15	24	M30*1.5	84	48	13	1.8	45	19	38	42
	KHB-3W-M36	315	20	19	30	M36*2	103	60	15	2.4	56	24	48	52
	KHB-3W-M42	315	25	24	35	M42*2	116	64	18	2.4	63	29	58	59.5
	KHB-3W-M52	315	32	30	40	M52*2	149	72	20	2.4	75	34	69	75.5
	KHB-3W-M60	315	40	36	45	M60*2	174	80	22	2.4	86	40	80	82
	KHB-3W-FG2	500	04	4	-	G1/8	69	40	10	-	32	13	26	35
	KHB-3W-FG4	500	06	6	-	G1/4	69	40	14	-	32	13	26	35
	KHB-3W-FG6	500	10	10	-	G3/8	72	42	14	-	40	17	34	34.5
	KHB-3W-FG8	500	13	13	-	G1/2	83	48	16	-	40	17	34	40
	KHB-3W-FG8	400	16	15	-	G1/2	83	48	16	-	45	19	38	42
	KHB-3W-FG12	315	20	19	-	G3/4	95	60	18	-	56	24	48	49
	KHB-3W-FG16	315	25	24	-	G1	113	64	20	-	63	29	58	56
	KHB-3W-FG20	315	32	30	-	G1 1/4	110	72	22	-	75	34	68	58.5
	KHB-3W-FG24	315	40	38	-	G1 1/2	130	80	24	-	86	40	80	67.5
KHB-3W-FG32	315	50	48	-	G2	140	96	26	-	104	48	99	70	
	KHB-3W-FN2	500	04	4	-	NPT1/8	69	40	10	-	32	13	26	35
	KHB-3W-FN4	500	06	6	-	NPT1/4	69	40	14	-	32	13	26	35
	KHB-3W-FN6	500	10	10	-	NPT3/8	72	42	14	-	40	17	34	34.5
	KHB-3W-FN8	500	13	13	-	NPT1/2	83	48	16	-	40	17	34	40
	KHB-3W-FN8	400	16	15	-	NPT1/2	83	48	16	-	45	19	38	42
	KHB-3W-FN12	315	20	19	-	NPT3/4	95	60	18	-	56	24	48	49
	KHB-3W-FN16	315	25	24	-	NPT1	113	64	20	-	63	29	58	56
	KHB-3W-FN20	315	32	30	-	NPT1 1/4	110	72	22	-	75	34	68	58.5
	KHB-3W-FN24	315	40	38	-	NPT1 1/2	130	80	24	-	86	40	80	67.5
	KHB-3W-FN32	315	50	48	-	NPT2	140	96	26	-	104	48	99	70
	KHB-3W-06LR	500	04	4	6	M12*1.5	67	40	10	-	32	13	26	35
	KHB-3W-08LR	500	06	6	8	M14*1.5	67	40	10	-	32	13	26	35
	KHB-3W-10LR	500	08	8	10	M16*1.5	74	42	11	-	40	17	34	35.5
	KHB-3W-12LR	500	10	10	12	M18*1.5	74	42	11	-	40	17	34	35.5
	KHB-3W-15LR	500	13	12	15	M22*1.5	82	48	12	-	40	17	34	40
	KHB-3W-18LR	400	16	15	18	M26*1.5	82	48	12	-	40	17	34	42
	KHB-3W-22LR	315	20	19	22	M30*2	101	60	14	-	56	24	48	42
	KHB-3W-28LR	315	25	24	28	M36*2	108	64	14	-	63	29	58	52
	KHB-3W-35LR	315	32	30	35	M42*2	141	72	16	-	75	34	68	53.5
	KHB-3W-42LR	315	40	36	42	M52*2	162	80	16	-	86	40	80	56
	KHB-3W-08SR	500	04	4	8	M14*1.5	73	40	12	-	32	13	26	37
	KHB-3W-10SR	500	06	6	10	M16*1.5	73	40	12	-	32	13	26	37
	KHB-3W-12SR	500	08	8	12	M18*1.5	76	42	12	-	40	17	34	37.5
	KHB-3W-14SR	500	10	10	14	M22*1.5	80	42	14	-	40	17	34	38.5
	KHB-3W-16SR	500	13	12	16	M24*1.5	86	48	14	-	40	17	34	43.5
	KHB-3W-20SR	500	13	12	20	M30*2	90	48	16	-	40	17	34	45.5
	KHB-3W-20SR	400	16	15	20	M30*2	90	48	16	-	45	19	38	45.5
	KHB-3W-25SR	315	20	19	25	M36*2	109	60	18	-	56	24	48	56
	KHB-3W-30SR	315	25	24	30	M42*2	120	64	20	-	63	29	58	59.5
	KHB-3W-38SR	315	32	30	38	M52*2	153	72	22	-	75	34	68	63

KHB Series with Linkage Handle

When ordering, please add (2×) before the Part NO.. For example, 2×KHB-FG8

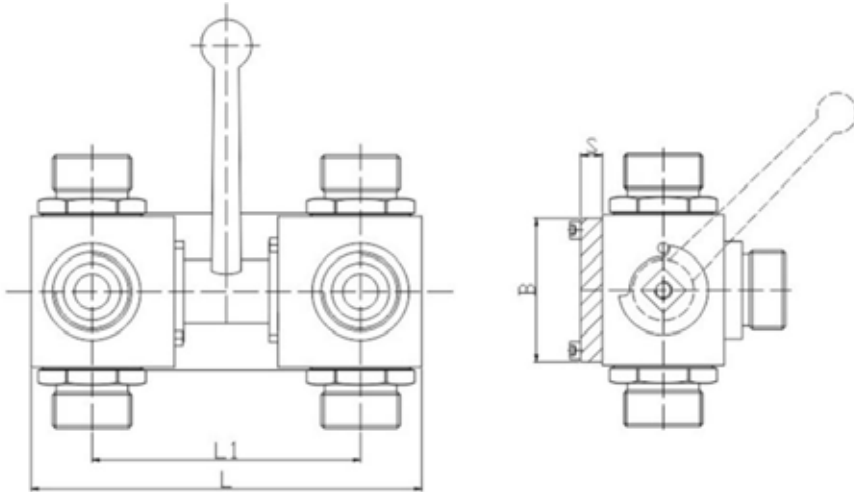


Dimensions

DN	L	L1	B	S
8	85	59	35	6
10	95	63	40	6
13	100	65	45	6
16	126	86	45	8
20	135	86	60	10
25	173	120	65	10

KHB-3W Series with Linkage Handle

When ordering, please add (2×) before the Part NO.. For example, 2×KHB-FG8

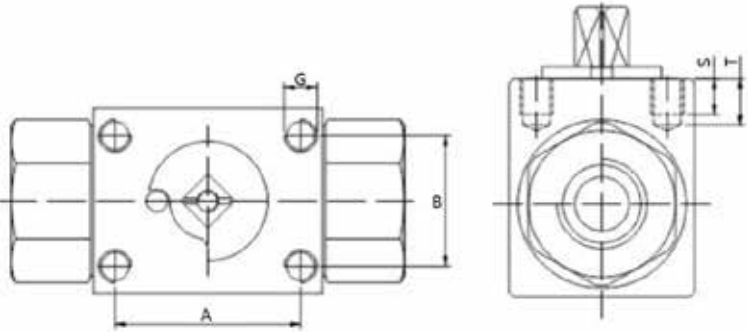
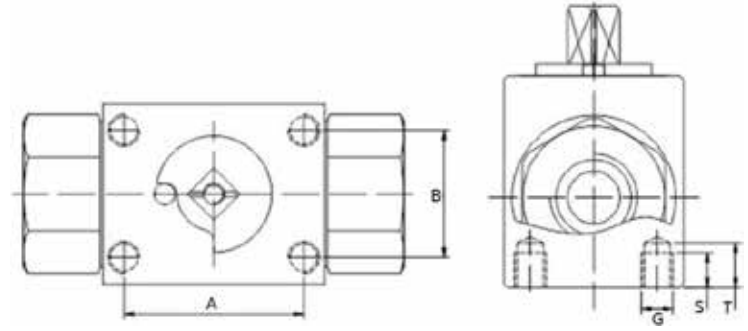
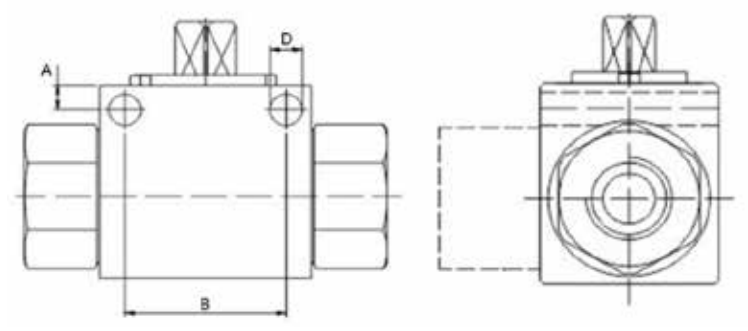
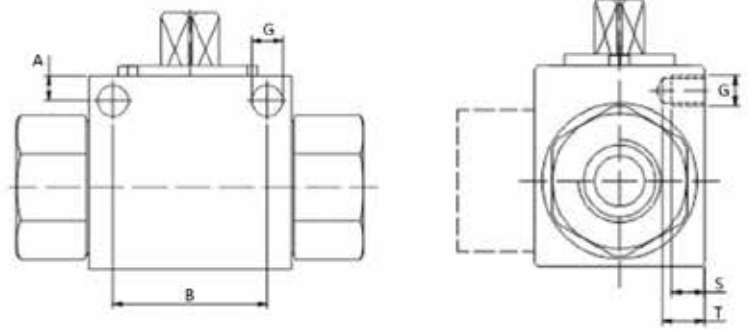


Dimensions

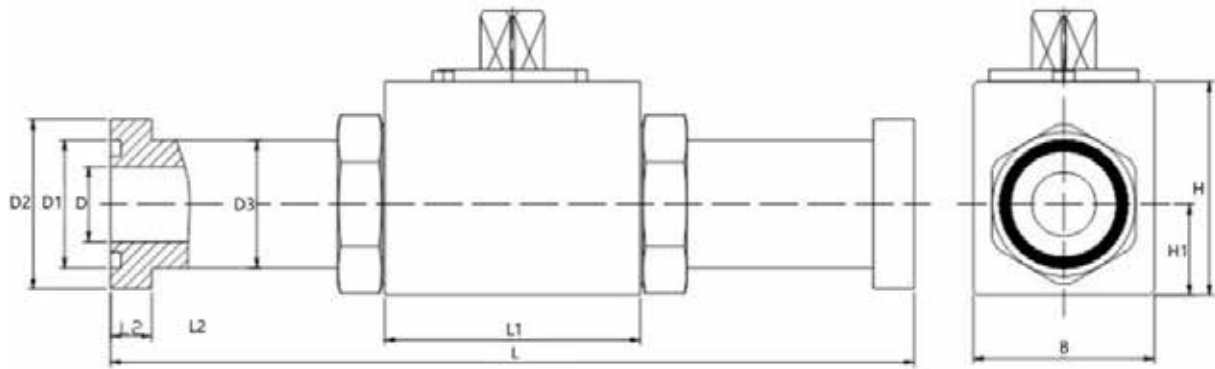
DN	L	L1	B	S
8	85	59	35	6
10	95	63	40	6
13	100	65	45	6
16	126	86	45	8
20	135	86	60	10
25	173	120	65	10

Ball Valve with Mounting Hole

When ordering, please explain or consult ROKE sales.

	DN	A	B	G	S	T
	4-6	26	18	M5	6	8.5
	8-10	34	24	M6	8	11
	13	34	24	M6	8	11
	16	34	24	M6	8	11
	20	45	38	M6	8	11
25	45	38	M6	8	11	
	DN	A	B	G	S	T
	4-6	24	20	M5	6	-
	8-10	34	24	M5	6.5	7.5
	13	38	27	M6	6.5	7.5
	16	38	27	M6	6.5	7.5
	20	51	39	M6	8	11
25	52	48	M6	8	11	
	DN	A	B	D	-	-
	4-6	4.8	31.5	4.5	-	-
	8-10	5	31.5	6.5	-	-
	13	6	38.5	6.5	-	-
	16	6	38.5	6.5	-	-
	20	6	48.5	6.5	-	-
25	7	50.5	8.5	-	-	
	DN	A	B	G	S	T
	4-6	4.8	31.5	M5	6.5	9
	8-10	5	31.5	M5	7	10
	13	6	38.5	M6	7	10
	16	6	38.5	M6	7	10
	20	6	48.5	M6	10	13
25	7	50.5	M6	10	13	

KHBS Series (SAE Flange Ball Valve)



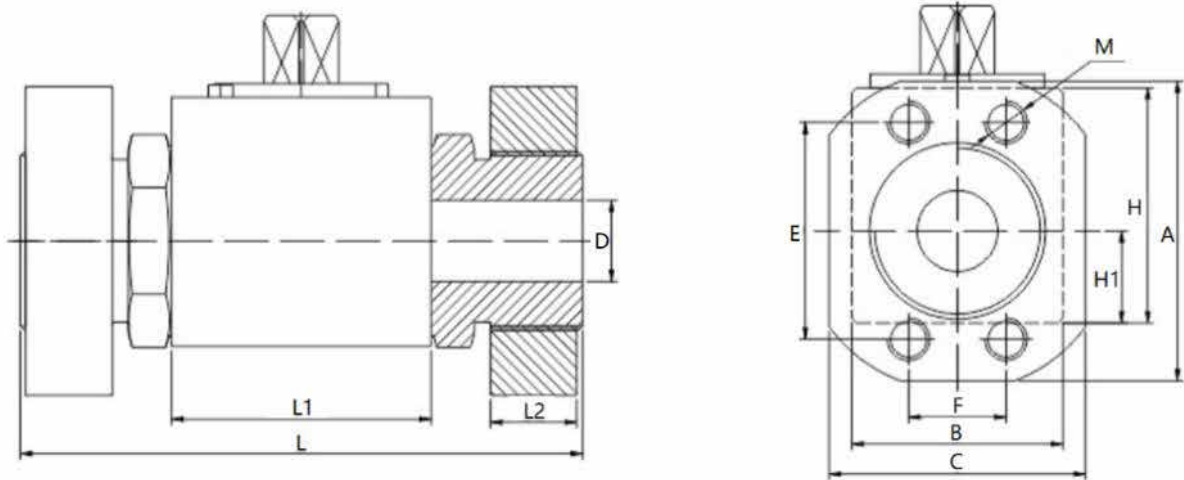
3000 PSI

Part NO.	Flange Size	DN	Dimension(mm)										
			D	D1	D2	D3	L	L1	L2	B	H	H1	O-RING
KHBS-F3-13	1/2"	13	13	25.4	30.2	24	151	48	6.7	34	40	17	18.7*3.53
KHBS-F3-20	3/4"	20	19	31.8	38.1	32	162	60	6.7	48	56	24	25.0*3.53
KHBS-F3-25	1"	25	24	39.6	44.4	38	178	64	8	58	63	29	32.9*3.53
KHBS-F3-32	1.1/4"	32	30	44.5	50.8	43	190.5	72	8	68	75	34	37.7*3.53
KHBS-F3-40	1.1/2"	40	38	53.7	60.3	50	231	80	8	80	86	40	47.2*3.53
KHBS-F3-50	2"	50	46	63.3	71.4	62	232	96	9.5	96	102	48	56.7*3.53

6000 PSI

Part NO.	Flange Size	DN	Dimension(mm)										
			D	D1	D2	D3	L	L1	L2	B	H	H1	O-RING
KHBS-F6-13	1/2"	13	13	25.4	31.7	24	151	48	7.7	34	40	17	18.7*3.53
KHBS-F6-20	3/4"	20	19	31.8	41.3	32	174	60	8.8	48	56	24	25.0*3.53
KHBS-F6-25	1"	25	24	39.6	47.6	38	198	64	9.5	58	63	29	32.9*3.53
KHBS-F6-32	1.1/4"	32	30	44.5	54	44	223	72	10.3	68	75	34	37.7*3.53
KHBS-F6-40	1.1/2"	40	38	53.7	63.5	51	281	80	12.6	80	86	40	47.2*3.53
KHBS-F6-50	2"	50	46	63.3	79.4	67	316	96	12.6	96	102	48	56.7*3.53

KHBG Series (SAE Flange Ball Valve)



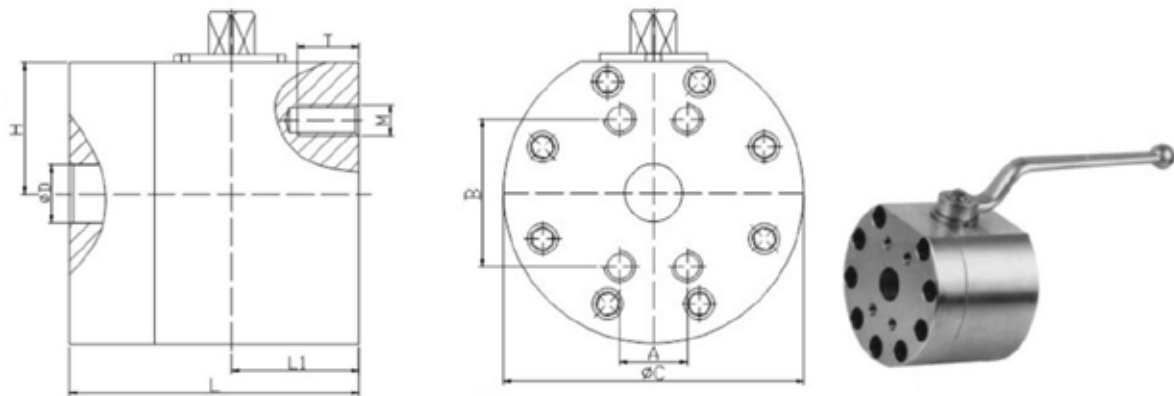
3000 PSI

Part NO.	Flange Size	DN	Dimension(mm)											
			D	L	L1	L2	E	F	B	H	A	C	H1	M
KHBG-F3-13	1/2"	15	15	104	48	15	38.1	17.5	38	46	54	46	19	M8
KHBG-F3-20	3/4"	20	19	121	60	18	47.6	22.3	48	56	65	52	24	M10
KHBG-F3-25	1"	25	24	133	64	18	52.4	26.2	58	63	70	59	29	M10
KHBG-F3-32	1.1/4"	32	30	163	72	18	58.7	30.2	68	75	79	73	34	M10
KHBG-F3-40	1.1/2"	40	38	168	80	18	69.9	35.6	80	86	94	83	40	M12
KHBG-F3-50	2"	50	46	186	96	25	77.8	42.9	96	102	102	97	48	M12
KHBG-F3-65/50	2.1/2"	50	46	174	96	25	88.9	50.8	96	102	114	109	48	M12

6000 PSI

Part NO.	Flange Size	DN	Dimension(mm)											
			D	L	L1	L2	E	F	B	H	A	C	H1	M
KHBG-F6-13	1/2"	15	15	104	48	16	40.5	18.2	38	46	56	48	19	M8
KHBG-F6-20	3/4"	20	19	121	60	18	50.8	23.8	48	56	71	60	24	M10
KHBG-F6-25	1"	25	24	133	64	24	57.2	27.8	58	63	81	70	29	M12
KHBG-F6-32	1.1/4"	32	30	163	72	26	66.6	31.8	68	75	95	78	34	M14
KHBG-F6-40	1.1/2"	40	38	168	80	28	79.3	36.5	80	86	113	95	40	M16
KHBG-F6-50	2"	50	46	186	96	30	96.8	44.5	96	102	133	114	48	M20

KHSA Series (SAE Flange Ball Valve)



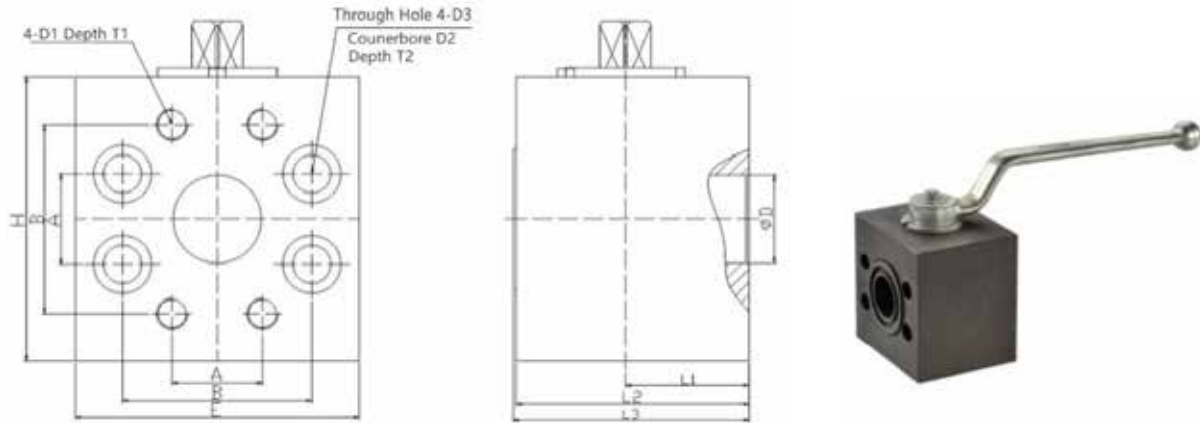
3000 PSI

Part NO.	Flange Size	DN	Dimension(mm)								
			D	L	L1	H	A	B	C	M	T
KHBG-F3-13	1/2"	15	15	75	33	31	17.5	38.1	78	M8	16
KHBG-F3-20	3/4"	20	19	80	35	37	22.2	47.6	98	M10	18
KHBG-F3-25	1"	25	24	88	38	39.5	26.2	52.4	117	M10	18
KHBG-F3-32	1.1/4"	32	30	100	50	68	30.2	58.7	145	M12	20
KHBG-F3-40	1.1/2"	40	38	110	55	78	35.7	69.8	165	M12	20
KHBG-F3-50	2"	50	46	116	58	94	42.9	77.8	197	M12	20
KHBG-F3-65	2.1/2"	65	60	150	75	94	50.8	88.9	197	M12	20
KHSA-F3-80	3"	80	70	160	80	98	61.9	106.4	207	M16	24
KHSA-F3-100	4"	100	95	170	85	121	77.8	130.2	257	M16	24
KHSA-F3-125	5"	125	118	210	105	140	92.1	152.4	295	M16	30

6000 PSI

Part NO.	Flange Size	DN	Dimension(mm)								
			D	L	L1	H	A	B	C	M	T
KHBG-F6-13	1/2"	15	15	75	33	31	18.2	40.5	78	M8	16
KHBG-F6-20	3/4"	20	19	80	35	37	23.8	50.8	98	M10	18
KHBG-F6-25	1"	25	24	88	38	39.5	27.8	57.2	117	M12	20
KHBG-F6-32	1.1/4"	32	30	100	50	68	31.8	66.7	145	M14	22
KHBG-F6-40	1.1/2"	40	38	110	55	78	36.5	79.4	165	M16	24
KHBG-F6-50	2"	50	46	116	58	94	44.5	96.8	197	M20	28

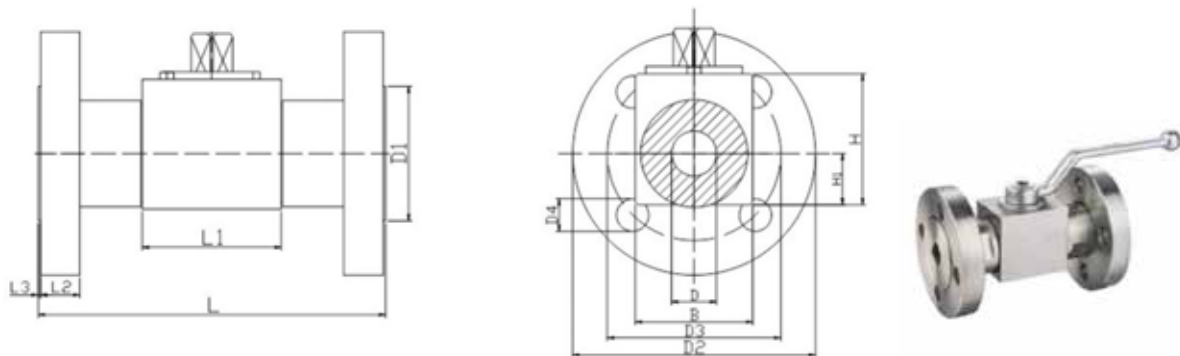
BEH Series (SAE Flange Ball Valve)



3000 PSI

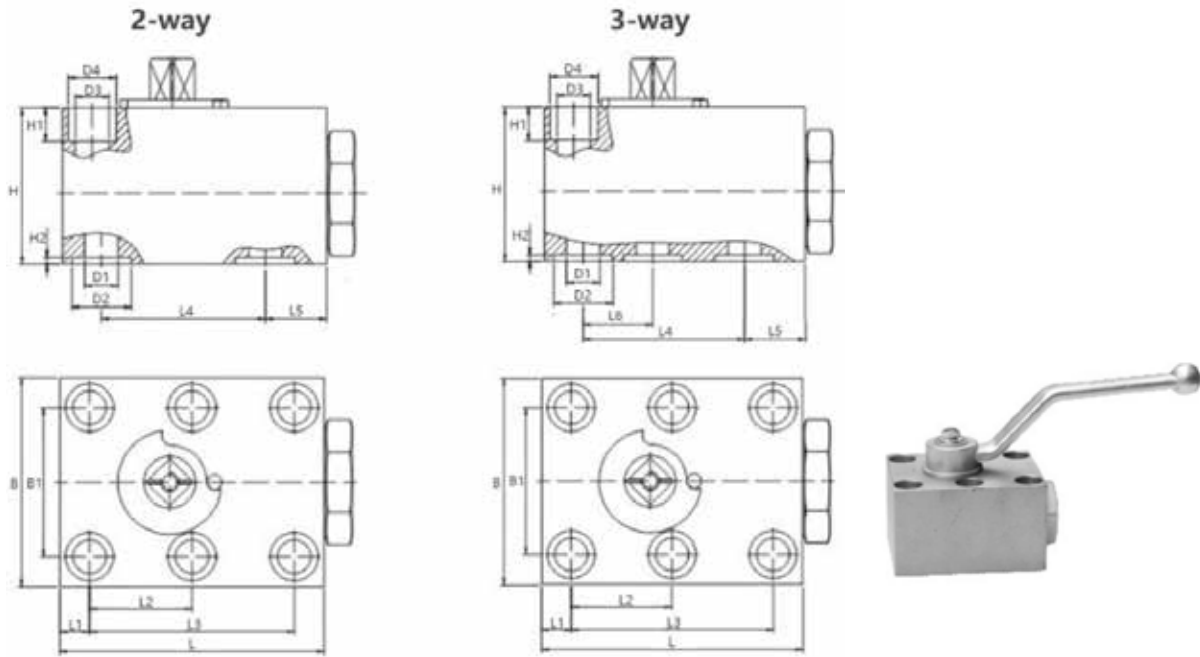
Part NO.	Flange Size	DN	Dimension(mm)												
			D	L1	L2	L3	A	B	H	E	D1	T1	D2	T1	D3
BEH-F3-32	1.1/4"	32	31	43.5	82	83	31.8	66.6	100	100	1/2-13UNC	25	20.5	17.5	13.5
BEH-F3-40	1.1/2"	40	38	53.5	99	100	36.5	79.3	120	120	5/8-11UNC	36	26	21.5	16.5
BEH-F3-50	2"	50	48	61	110	111	44.5	96.8	124	134	3/4-10UNC	36	30.5	25	20.5

KHBF Series (Flange Ball Valve)



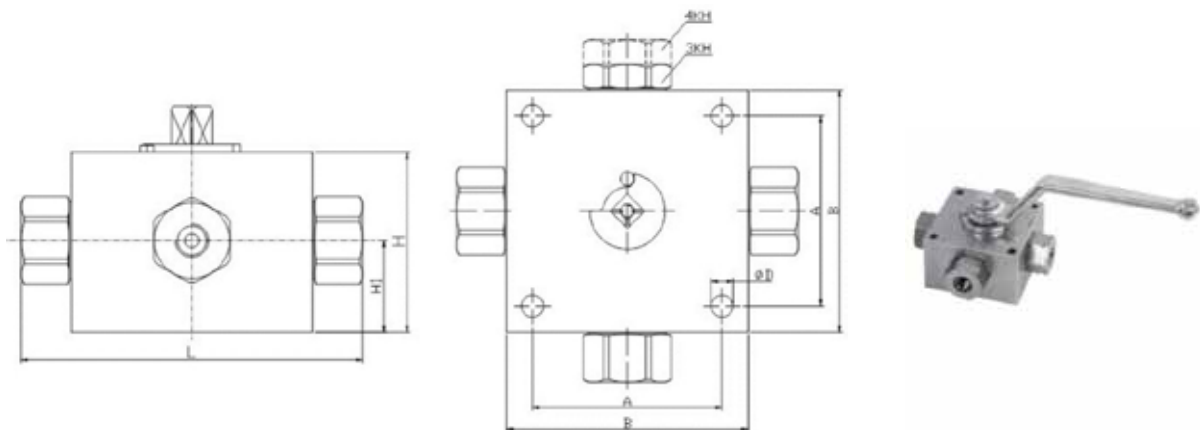
Part NO.	Working Pressure	DN	Dimension(mm)											
			D	L	L1	L2	L3	D1	D2	D3	D4	H	H1	B
KHBF-16	40	15	15	130	48	16	1	45	95	65	14	46	19	38
	20					105			75	14				
	26					128			90	18				
KHBF-20	40	20	19	150	60	18	1	58	105	75	14	56	24	48
KHBF-25	40	25	24	160	64	18	2	65	115	85	14	63	58	29
	24					138			100	18				
	28					148			105	22				
	34					158			115	22				
KHBF-32	40	32	30	180	72	18	2	78	138	100	18	75	68	34
	160					26			155	110	22			
KHBF-40	40	40	38	200	80	18	3	88	148	110	18	86	80	40
	160					28			168	125	22			
	250					34			185	135	26			
	315					38			195	145	26			
KHBF-50	40	50	46	230	96	20	3	102	165	125	18	102	96	48
	63					26			178	135	22			
	160					30			195	145	26			
	250					38			198	150	26			
	315					42			208	160	26			

KHP Series (Plate Type Ball Valve)



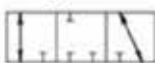
Part NO.	DN	Dimension(mm)															
		L	L1	L2	L3	L4	L5	L6	D1	D2	D3	D4	B	B1	H	H1	H2
KHP-06	6	59	8.5	17.5	35	35	15.5	17.5	6	11	6.5	11	42	27	38	7	1.3
KHP-10	10	71	8	27.5	55	44	16.5	19	10	16	9	13	56	40	42	9	1.8
KHP-16	16	100	8.5	41.5	83	58	25	26.5	15	25	9	13	63	45	50	9	1.8
KHP-20	20	117	10	48.5	97	69	28	32	19	30	11	16.5	71	51	60	10.5	2
KHP-25	25	137	11	57.5	115	81	31	38	24	35	11	16.5	82	60	67	10.5	2
KHP-32	32	165	12	68	136	96	40	46	30	40	13	19	102	78	75	13	2.4
KHP-40	40	180	28.5	56	112	112	39.5	56	38	50	17	26	130	95	85	17	2.4
KHP-50	50	220	38	68	136	136	46	68	46	56	22	33	150	112	105	22	2.7

3KH/4KH Series (3-way/4way Ball Valve)



3KH Series

L Type 0-90°

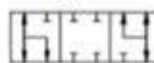


T Type 0-90°

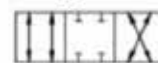


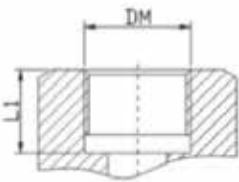
4KH Series

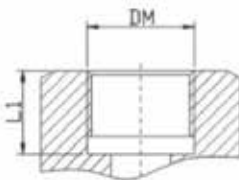
T Type 0-90°

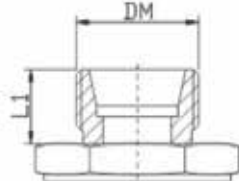


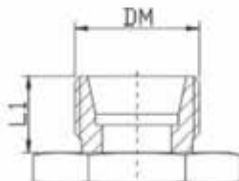
X Type 0-90°



G	Part NO.	PN	DN	Dimension(mm)							
				DM	L	H	H1	A	B	D	L1
	3KH/4KH-FG2	500	04	G1/8	100	52	26.5	55	70	6.5	13
	3KH/4KH-FG4	500	06	G1/4	100	55	28	65	80	6.5	13
	3KH/4KH-FG6	500	10	G3/8	115	55	28	65	80	6.5	13
	3KH/4KH-FG8	500	13	G1/2	135	60	30	80	99	8.7	15
	3KH/4KH-FG12	315	20	G3/4	148	71	37	85	112	8.7	17
	3KH/4KH-FG16	315	25	G1	172	79	42.5	105	124	11	19
	3KH/4KH-FG20	315	32	G1 1/4	180	79	42.5	105	124	11	20
	3KH/4KH-FG24	315	40	G1 1/2	230	107	57.5	150	198	14.5	24

NPT	Part NO.	PN	DN	Dimension(mm)							
				DM	L	H	H1	A	B	D	L1
	3KH/4KH-FN2	500	04	NPT1/8	105	52	26.5	55	70	6.5	12
	3KH/4KH-FN4	500	06	NPT1/4	105	55	28	65	80	6.5	17
	3KH/4KH-FN6	500	10	NPT3/8	115	55	28	65	80	6.5	17
	3KH/4KH-FN8	500	13	NPT1/2	140	60	30	80	99	8.7	22
	3KH/4KH-FN12	315	20	NPT3/4	154	71	37	85	112	8.7	23
	3KH/4KH-FN16	315	25	NPT1	183	79	42.5	105	124	11	27
	3KH/4KH-FN20	315	32	NPT1 1/4	190	79	42.5	105	124	11	28
	3KH/4KH-FN24	315	40	NPT1 1/2	236	107	57.5	150	198	14.5	33

LR	Part NO.	PN	DN	Dimension(mm)							
				DM	L	H	H1	A	B	D	L1
	3KH/4KH-06LR	500	04	M12*1.5	105	52	26.5	55	70	6.5	7
	3KH/4KH-08LR	500	06	M14*1.5	105	55	28	65	80	6.5	7
	3KH/4KH-10LR	500	08	M16*1.5	114	55	28	65	80	6.5	8
	3KH/4KH-12LR	500	10	M18*1.5	114	55	28	65	80	6.5	8
	3KH/4KH-15LR	315	13	M22*1.5	136	60	30	80	99	8.7	9
	3KH/4KH-18LR	315	13	M26*1.5	136	60	30	80	99	8.7	9
	3KH/4KH-22LR	315	20	M30*2	152	71	37	85	112	8.7	11
	3KH/4KH-28LR	315	25	M36*2	170	79	42.5	105	124	11	11
	3KH/4KH-35LR	315	25	M45*2	74	79	42.5	105	124	11	13
	3KH/4KH-42LR	315	40	M52*2	246	107	57.5	150	198	14.5	13

SR	Part NO.	PN	DN	Dimension(mm)							
				DM	L	H	H1	A	B	D	L1
	3KH/4KH-08SR	500	04	M16*1.5	105	52	26.5	55	70	6.5	9
	3KH/4KH-10SR	500	06	M18*1.5	105	55	28	65	80	6.5	9
	3KH/4KH-12SR	500	08	M20*1.5	116	55	28	65	80	6.5	9
	3KH/4KH-14SR	315	10	M22*1.5	121	55	28	65	80	6.5	11
	3KH/4KH-16SR	315	13	M24*1.5	140	60	30	80	99	8.7	11
	3KH/4KH-20SR	315	13	M30*2	144	60	30	80	99	8.7	13
	3KH/4KH-25SR	315	20	M36*2	162	71	37	85	112	8.7	15
	3KH/4KH-30SR	315	25	M42*2	80	79	42.5	105	124	11	15
	3KH/4KH-38SR	315	25	M52*2	184	79	42.5	105	124	11	17

CJZQ Series Ball Valve



L Type: Male Thread

G Type: Female Thread

F Type: Flange

Dimensions

L	Part NO.	PN	DN	Dimension(mm)					
				DM	L	L1	D1	D2	□S
	CJZQ-L6H	315	6	M16*1.5	81	12	6	11	40
	CJZQ-L8H	315	8	M22*1.5	86	14	8	16	40
	CJZQ-L10H	315	10	M27*1.5	100	16	10	20	52
	CJZQ-L15H	315	15	M30*1.5	105	18	15	25	52
	CJZQ-L20H	315	20	M36*2	121	20	20	30	64
	CJZQ-L25H	315	25	M42*2	135	22	24	35	70
	CJZQ-L32H	315	32	M52*2	160	24	30	40	83
	CJZQ-L40H	315	40	M60*2	180	26	38	50	94
	CJZQ-L50H	315	50	M72*2	205	28	48	60	110

G	Part NO.	PN	DN	Dimension(mm)					
				DM	L	L1	D1	D2	□S
	CJZQ-G6H	315	6	M14*1.5	68	12	6	11	40
	CJZQ-G8H	315	8	M16*1.5	70	14	8	16	40
	CJZQ-G10H	315	10	M18*1.5	88	16	10	20	52
	CJZQ-G15H	315	15	M27*1.5	91	18	15	25	52
	CJZQ-G20H	315	20	M33*2	100	20	20	30	64
	CJZQ-G25H	315	25	M42*2	111	22	24	35	70
	CJZQ-G32H	315	32	M48*2	131	24	30	40	83

F	Part NO.	PN	DN	Dimension(mm)					
				M	L	L1	D	D1	□S
	CJZQ-F10H	200	10	M8	70	22	73	10	52
	CJZQ-F15H	200	15	M8	75	22	78	15	52
	CJZQ-F20H	200	20	M10	85	22	88	20	64
	CJZQ-F25H	200	25	M12	96	28	98	24	70
	CJZQ-F32H	200	32	M14	106	28	113	30	83
	CJZQ-F40H	200	40	M16	125	36	130	38	94
	CJZQ-F50H	200	50	M20	146	36	156	48	110
	CJZQ-F65H	200	65	M22	170	45	178	60	134
	CJZQ-F80H	200	80	M24	185	45	218	70	169

QINS Series Ball Valve



L Type: Male Thread **-H1:** 100 bar
G Type: Female Thread **-H2:** 200 bar
F Type: Flange **-H3:** 315 bar

L	Part NO.	PN	DN	Dimension(mm)				
				DM	L	L1	D1	□S
	QINS-L10-H3	315	10	M18*1.5	106	18	10	52
	QINS-L20-H3	315	20	M27*2	125	20	20	64
	QINS-L25-H3	315	25	M42*2	139	23	24	70
	QINS-L32-H3	315	32	M60*2	164	30	32	83
	QINS-L40-H3	315	40	M60*2	180	38	38	94

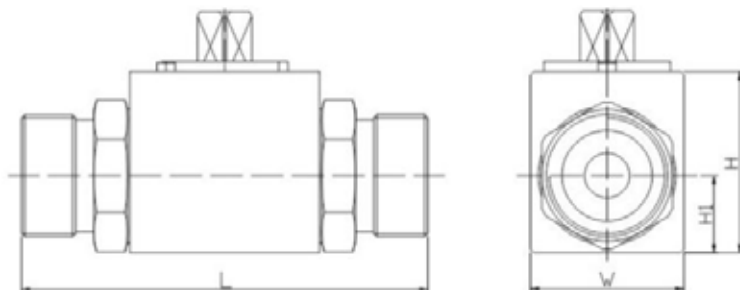
G	Part NO.	PN	DN	Dimension(mm)				
				DM	L	L1	D1	□S
	QINS-G10-H3	315	10	M18*1.5	80	15	10	52
	QINS-G15-H3	315	15	M22*1.5	90	18	15	55
	QINS-G20-H3	315	20	M27*2	100	20	20	64
	QINS-G25-H3	315	25	M32*2	110	22	24	70
	QINS-G32-H3	315	32	M42*2	120	24	32	83
	QINS-G40-H3	315	40	M48*2	135	26	38	94

F	Part NO.	PN	DN	Dimension(mm)				
				L	L1	D1	D2	□S
	QINS-F10-H3	315	10	80	10	10	18.5	52
	QINS-F15-H3	315	15	90	11	15	22.5	55
	QINS-F20-H3	315	20	100	12	20	28.5	64
	QINS-F25-H3	315	25	106	14	24	33.5	70
	QINS-F32-H3	315	32	120	16	30	43	83
	QINS-F40-H3	315	40	135	18	38	52	94
	QINS-F50-H3	315	50	148	20	48	65	116

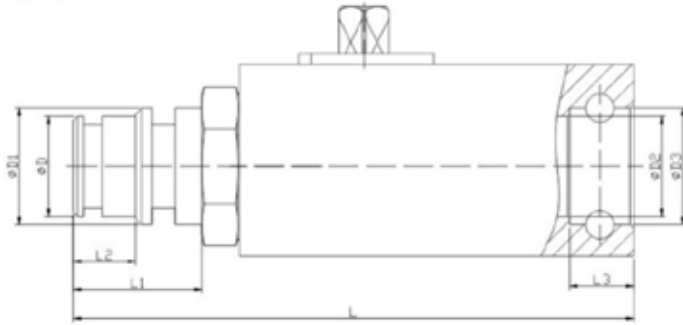
JZQ Series Ball Valve



L Type: Male Thread **H2:** 200 bar
G Type: Female Thread **H3:** 315 bar
F Type: Flange Type
P Tupe: Paltes Type



KJ Series (Ball Valve for Coal Mine)



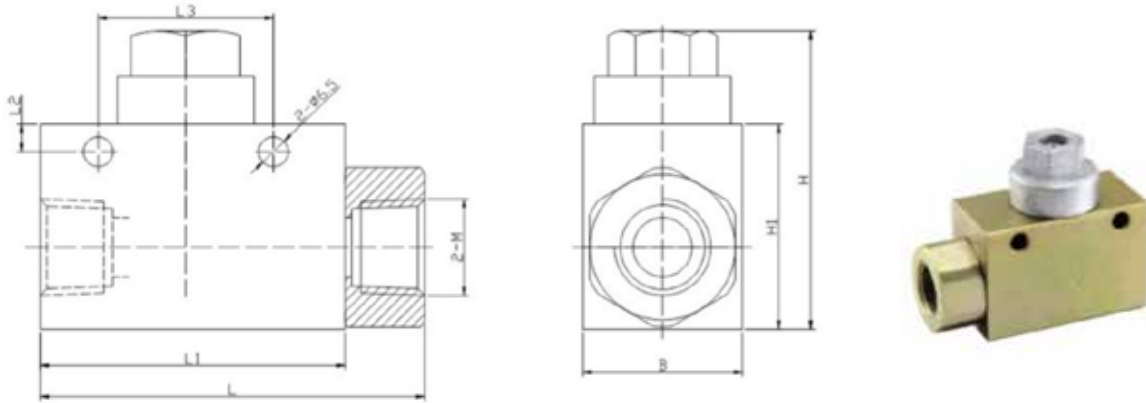
Part NO.	PN	DN	Dimension(mm)							
			L	L1	L2	L3	D	D1	D2	D3
KJ-10	500	10	110	26	10	16	15	18	15	18
KJ-13	500	13	110	26	12	14	18	20	18	20
KJ-16	315	16	125	30	14	16	20	25	20	25
KJ-20	315	20	125	31	15	16	24	28	24	28
KJ-25	315	25	136	31	15	16	30	35	30	35
KJ-32	315	32	151	31	15	16	37	42	37	42

ZK-KBV Series (Ball Valve for Coal Mine)



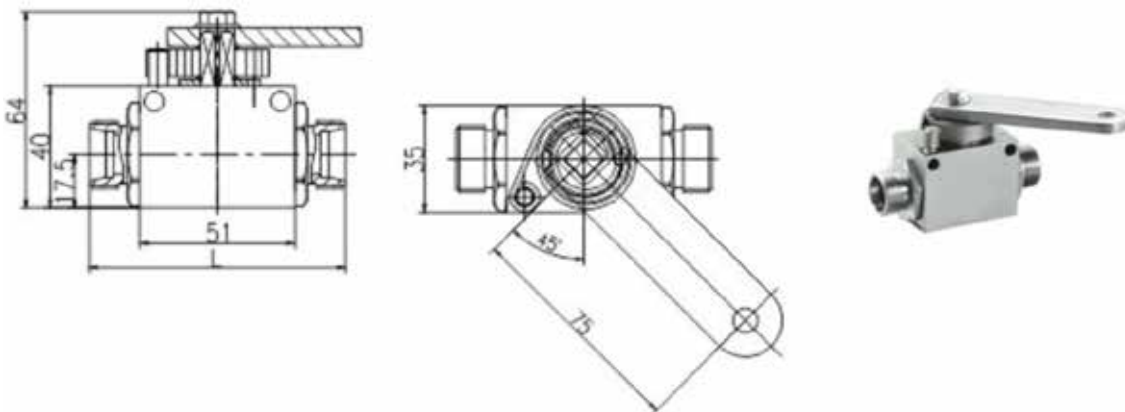
A-B	Part NO.	PN	DN	Dimension(mm)						
				L	L1	L2	L3	D	H	
	ZK-KBV-06-AB	500	06	104	40	28	24	24	32	
	ZK-KBV-10-AB	500	10	111	42	29	24	30	40	
	ZK-KBV-12-AB	500	13	112	48	29	25	35	40	
	ZK-KBV-20-AB	315	20	125	60	29	23	41	56	
	ZK-KBV-25-AB	315	25	144	64	35	28	53	63	
	ZK-KBV-32-AB	315	32	167	72	35	24	60	75	
A-A	Part NO.	PN	DN	Dimension(mm)						
				L	L1	L2	L3	D	H	
	ZK-KBV-06-AA	500	06	109	40	28	-	-	32	
	ZK-KBV-10-AA	500	10	116	42	29	-	-	40	
	ZK-KBV-12-AA	500	13	116	48	29	-	-	40	
	ZK-KBV-20-AA	315	20	131	60	29	-	-	56	
	ZK-KBV-25-AA	315	25	151	64	35	-	-	63	
	ZK-KBV-32-AA	315	32	178	72	35	-	-	75	
B-B	Part NO.	PN	DN	Dimension(mm)						
				L	L1	L2	L3	D	H	
	ZK-KBV-06-BB	500	06	99	40	-	24	24	32	
	ZK-KBV-10-BB	500	10	106	42	-	24	30	40	
	ZK-KBV-12-BB	500	13	106	48	-	25	35	40	
	ZK-KBV-20-BB	315	20	119	60	-	23	41	56	
	ZK-KBV-25-BB	315	25	137	64	-	28	53	63	
	ZK-KBV-32-BB	315	32	156	72	-	24	60	75	

ZK-CV Series (Ball Valve for Broken Pipe)



Part NO.	PN	DN	Dimension(mm)							
			L	L1	L2	L3	B	H	H1	M
ZK-CV-1/2	500	13	84.5	67	6	38.5	35	45	65.5	PT1/2"
ZK-CV-3/4	400	13	89	67	6	38.5	35	45	65.5	PT3/4
ZK-CV-1	315	25	120	95	6	48.5	50	58	83.5	PT1"

KBKH Series Ball Valve

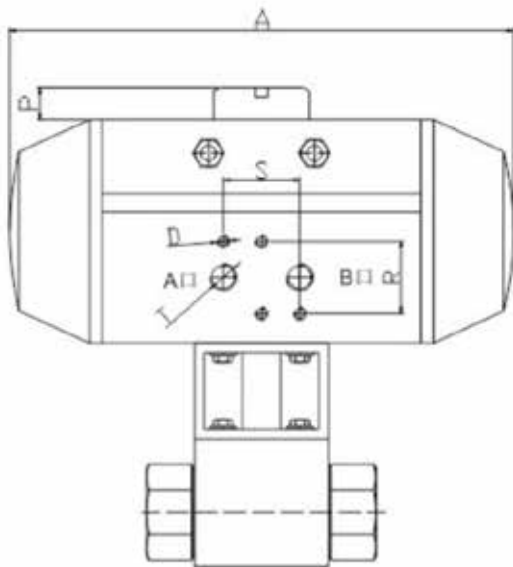


LR	Part NO.	PN	DN	DW	D1	D2	L	L1
	HBKH-06L	400	04	M12*1.5	4	6	84	7.5
HBKH-08L	400	06	M14*1.5	6	8	84	7.5	
HBKH-10L	400	08	M16*1.5	8	10	84	8.5	
HBKH-12L	400	10	M18*1.5	10	12	84	8.5	
HBKH-15L	400	13	M22*1.5	12	15	84	9.5	
HBKH-18L	400	13	M26*1.5	12	18	84	9.5	
SR	Part NO.	PN	DN	DW	D1	D2	L	L1
	HBKH-10S	400	06	M18*1.5	8	10	86	9.5
HBKH-12S	400	08	M20*1.5	10	12	86	9.5	
HBKH-16S	400	13	M24*1.5	10	16	90	11.5	

Mounting Holes on the Side

	Standard Hole				Extension Hole			
	DN	B	a	d	DN	B	a	d
	13	37.5	4.8	6.5	13	41.5	4.8	6.5

PBV Series (Pneumatic Ball Valve)



Selection table of pneumatic actuator

Part NO.	Torque Nm (5 bar)	Valve DN	Dimension(mm)					
			A	P	R	S	T	D
RAT032DA	7.5	DN4-5	109	20	32	24	G1/4	M5*8
RAT032DA	20.8	DN6-8	163.5	25.5	32	24	G1/4	M5*8
RAT032DA	36.6	DN10-13	181	30.4	32	24	G1/4	M5*8
RAT032DA	58.8	DN16-20	207	25.5	32	24	G1/4	M5*8
RAT032DA	113.7	DN25	258	25.5	32	24	G1/4	M5*8
RAT032DA	169.6	DN32	287	25.5	32	24	G1/4	M5*8
RAT032DA	291.5	DN40	312.5	25.6	32	24	G1/4	M5*8
RAT032DA	438.7	DN50-80	411	25.7	32	24	G1/4	M5*8
RAT032DA	668.5	DN100	488	25.8	32	24	G1/4	M5*8

EBV Series (Electric Ball Valve)



Electric Ball Valve is composed of ball valve and electric actuator. It is suitable for pressure below 500bar and can be controlled remotely.

Electric ball valve generally uses AC 220V, AC 380V, DC 24V voltage as power, receives 4-20mA or 0-10Ma current signal, and controls the ball valve to rotate 0-90 ° to complete the opening and closing of the ball valve.

When ordering, please select the ball valve model and inform the voltage and current.

DOVAL

STEEL GROUP



FT-LOK[®]
FITTING, TUBING & VALVES

WWW.DOVALSTEELGROUP.COM
